

Wi-Fi Module

Wi-Fi Internet-of-Things Module (Realtek RTL8195AM)

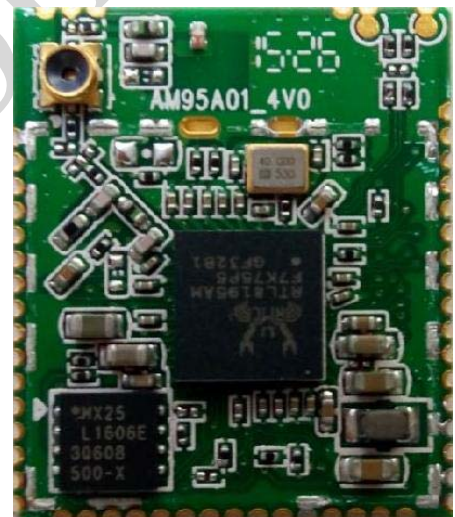
WFM-250

WFM-250 is a single chip wireless Internet-of-Things module. The advance Realtek RTL8195AM chipset combines an ARM-Cortex M3 MCU, WLAN MAC, a 1T1R capable WLAN baseband and RF. It provides useful high speed connectivity interfaces, such as USB 2.0 host, USB 2.0 device, SDMMC HS, SDIO device, and MII/RMII interfaces. It also provides a bunch of configurable GPIOs which are configured as digital peripherals for different application and control purpose.

Features

- Support IEEE 802.11 b/g/n Standard
- One Transmit and one Receive path (1T1R)
- Frequency range: 2.412GHz – 2.484GHz
- ARM® Cortex®-M3 Core
- CPU Clock: 166MHz
- Memory capacity: 1MB of ROM
2MB of Flash
496kB of SRAM
- Flash size: 8MB
- Operating Voltage: DC 3.3V
- Other interface: UART, JTAG, I2S, I2C, SPI, SDIO
- RoHS Compliant
- Dimension: 18 mm x 21 mm x 1 mm

Outline



Applications

- Cloud Connectivity
- Home Automation
- Home Appliances
- Access Control
- Security Systems
- Smart Energy
- Internet Gateway
- Industrial Control
- Smart Plug and Metering
- Wireless Audio
- IP Network Sensor Nodes